



WWW.E-V-C.COM

PU big board

product description

PU big board

Test report

case appreciation

Installation instructions

Enterprise brief introduction

Product architecture

A modern living room with a dark, textured stone wall. A large black TV is mounted on the wall, displaying the website address "WWW.E-V-C.COM" in white text. Below the TV is a black soundbar with five circular drivers. To the left of the soundbar is a black shelf with two glass bottles and a small golden object. To the right is a black shelf with a small black vase containing dried reeds. In the foreground, a dark grey sofa is partially visible, with a red textured rug on the floor. A black coffee table in front of the sofa holds a bowl of green lemons and a magazine.

WWW.E-V-C.COM



Product introduction

- Natural stone texture, imitation up to 95%
- The maximum size can be 1200*300mm
- Splicing gap less, more realistic
- Super light material, easy to install, a day can be spread 50
- Super multi - faceted version, concave and convex strong, size, style

WWW.E-V-C.COM





多面石皮(3)Faceted stone skin
规格size:1200*600(1-5公分)



多面石皮(4)Faceted stone skin
规格size:1200*600(1-5公分)



多面石皮(5)Faceted stone skin
规格size:1200*600(1-5公分)



多面石皮(6)Faceted stone skin
规格size:1200*600(1-5公分)



多面石皮(7)Faceted stone skin
规格size:1200*600(1-5公分)



多面石皮(8)Faceted stone skin
规格size:1200*600(1-5公分)

多面石皮
Faceted stone skin



多面石皮(9)Faceted stone skin
规格size:1200*600(1-5公分)



多面石皮(10)Faceted stone skin
规格size:1200*600(1-5公分)



多面石皮(11)Faceted stone skin
规格size:1200*600(1-5公分)



多面石皮(14)Faceted stone skin
规格size:1200*600(1-5公分)



多面石皮(15)Faceted stone skin
规格size:1200*600(1-5公分)



多面石皮(16)Faceted stone skin
规格size:1200*600(1-5公分)



多面石皮(17)Faceted stone skin
规格size:1200*600(1-5公分)



多面石皮(18)Faceted stone skin
规格size:1200*600(1-5公分)



多面石皮(19)Faceted stone skin
规格size:1200*600(1-5公分)



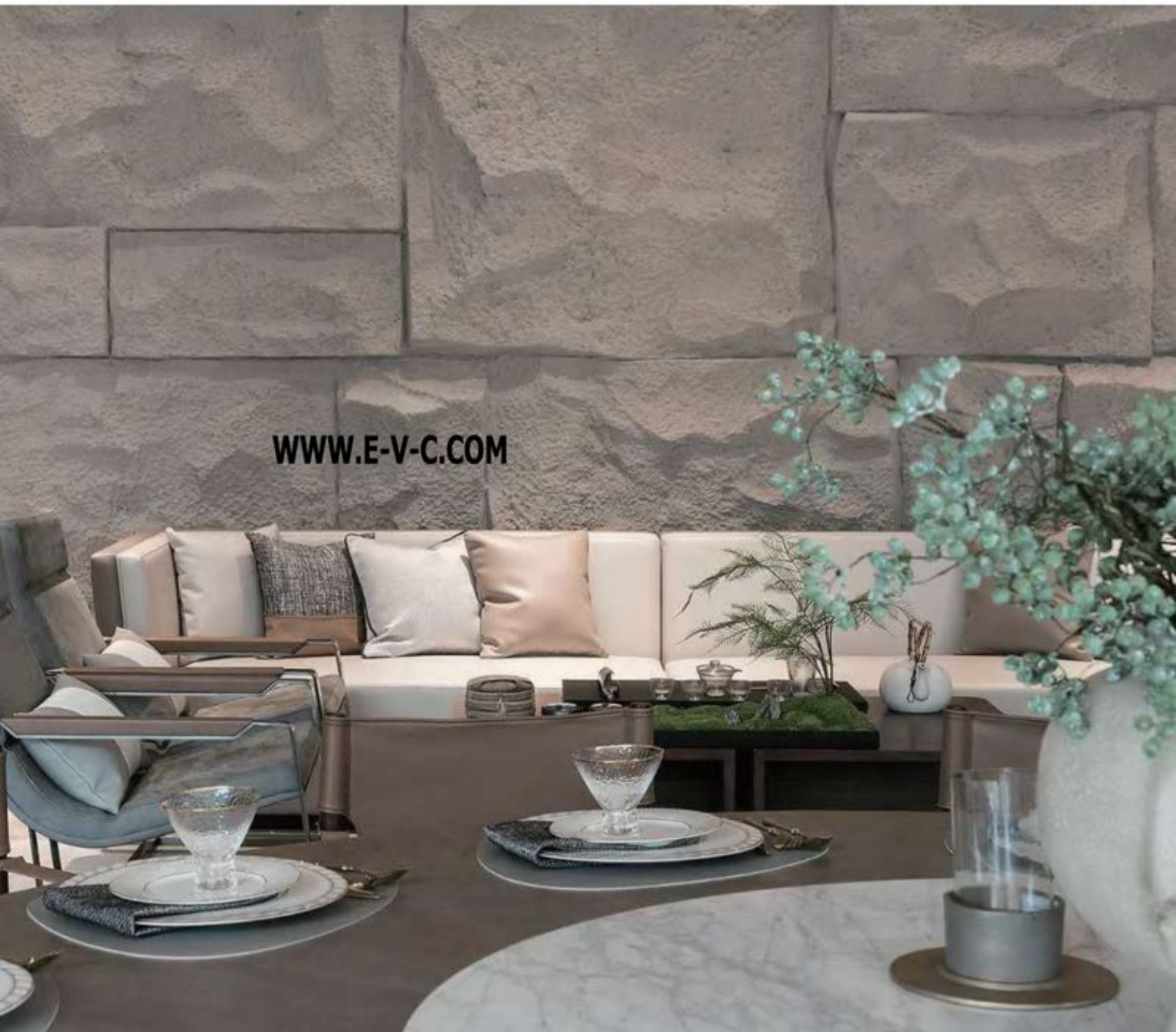
多面石皮(20)Faceted stone skin
规格size:1200*600(1-5公分)



WWW.E-V-C.COM

多面石皮
Faceted stone skin

WWW.E-V-C.COM



石皮凹凸强面
CONCAVE AND CONVEX STRONG SURFACE OF STONE



石皮凹凸强面 (1) Concave and convex surface
规格size: 1200*600mm (2-12公分) 4个版面



石皮凹凸强面 (2) Concave and convex surface
规格size: 1200*600mm (2-12公分) 4个版面



石皮凹凸强面 (3) Concave and convex surface
规格size: 1200*600mm (2-12公分) 4个版面



石皮凹凸强面 (4) Concave and convex surface
规格size: 1200*600mm (2-12公分) 4个版面



石皮阴角stone skin yin angle
规格size:1200*200-400mm (2-4公分)



石皮阳角stone skin yang angle
规格size:1200*200-400mm (2-4公分)

石皮大板
LARGE BOARD OF STONE SKIN



泼甜山岩石 Pour sweet mountain rocks
规格size:1200*3000mm (2-13公分) 1个版面



石皮大板(2) Large board of stone skin
规格size:1200*3000mm (2-13公分) 1个版面



石皮大板 Large board of stone skin
规格size:1200*1800mm (2-10公分) 1个版面





石皮中板1Stone skin middle plate
规格size:2400*600mm (2-8公分)



石皮中板2Stone skin middle plate
规格size:2400*600mm (2-8公分)



石皮中板3Stone skin middle plate
规格size:2400*600mm (2-8公分)



石皮中板4Stone skin middle plate
规格size:2400*600mm (2-8公分)



石皮中板(1) Stone skin middle plate
规格size:2400*800mm (2-8公分)



石皮中板(2) Stone skin middle plate
规格size:2400*800mm (2-8公分)



石皮中板
STONE SKIN MIDDLE PLATE

PU big board



石皮中板 Stone skin middle plate
规格size:2400*300mm (2-8公分)



石皮中板 Stone skin middle plate
规格size:2400*400mm (2-8公分)



石皮中板 Stone skin middle plate
规格size:2400*450mm (2-8公分)



石皮中板 Stone skin middle plate
规格size:2400*600mm (2-6公分)

蘑菇石
THE MUSHROOM STONE



蘑菇石 Stone skin middle plate
规格size:600*600mm (2-11公分)



蘑菇石 (1) Stone skin middle plate
规格size:900*450mm (2-11公分)



蘑菇石 (2) Stone skin middle plate
规格size:900*450mm (2-11公分)



蘑菇石 (1) Stone skin middle plate
规格size:1000*600mm (2-11公分)



www.e-v-c.com



蘑菇石 (2) Stone skin middle plate
规格size: 1000*600mm (2-11公分)



蘑菇石 Stone skin middle plate
规格size: 1200*450mm (2-11公分)



蘑菇石 Stone skin middle plate
规格size: 1500*750mm (2-14公分)



蘑菇石 (2) Stone skin middle plate
规格size: 1500*750mm (2-14公分)



蘑菇石 Stone skin middle plate
规格size: 1200*600mm (2-9公分)

蘑菇石阴/阳角
MUSHROOM STONE YIN/YANG ANGLE



蘑菇石阴角
MUSHROOM STONE YIN ANGLE
规格size:800*400-600mm (4-8公分)



蘑菇石阳角
MUSHROOM STONE YANG ANGLE
规格size:800*400-600mm (4-8公分)

黑山岩小碎石
BLACK MOUNTAIN ROCK SMALL RUBBLE

PU big board



黑山岩小碎石Black mountain rock small rubble
规格size:2400*600mm (2-4公分)



黑山岩小板
LIGHT CLAY STONE SKIN



黑山岩小板(1) Black mountain rock plate
规格size: 1500*750mm (2-9公分)



黑山岩小板(2) Black mountain rock plate
规格size: 1500*750mm (2-9公分)



黑山岩小板(3) Black mountain rock plate
规格size: 1500*750mm (2-9公分)



黑山岩小板(4) Black mountain rock plate
规格size: 1500*750mm (2-9公分)



黑山岩小板(5) Black mountain rock plate
规格size: 1500*750mm (2-9公分)



黑山岩小板(6) Black mountain rock plate
规格size: 1500*750mm (2-9公分)



黑山岩板 (1) Black mountain middle plate
规格size: 3000*750mm (2-9公分)

黑山岩板 (2) Black mountain middle plate
规格size: 3000*750mm (2-9公分)

黑山岩板 (3) Black mountain middle plate
规格size: 3000*750mm (2-9公分)

岩壁嶮峻
ROCK CHAN COMPLETED



岩壁嶮峻 (1)
Rock Chan completed
规格size:
1200*600mm (2-12公分)



岩壁嶮峻 (2)
Rock Chan completed
规格size:
1200*600mm (2-12公分)



岩壁嶮峻 (3)
Rock Chan completed
规格size:
1200*600mm (2-12公分)



岩壁嶮峻 (4)
Rock Chan completed
规格size:
1200*600mm (2-12公分)



岩壁嶮峻
Rock Chan completed
规格size:
2400*600mm (2-12公分)



岩壁嶮峻 (1)
Rock Chan completed
规格size:
2400*600mm (2-12公分)



岩壁嶮峻 (2)
Rock Chan completed
规格size:
2400*600mm (2-12公分)



岩壁嶮峻 (A)
Rock Chan completed
规格size:
2400*600mm (2-10公分)



岩壁嶮峻 (B)
Rock Chan completed
规格size:
2400*600mm (2-10公分)



岩壁嶮峻 (C)
Rock Chan completed
规格size:
2400*600mm (2-10公分)

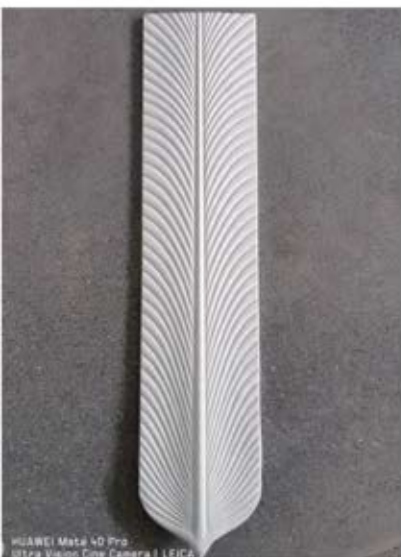
岩壁嶮峻连纹大板
BLACK MOUNTAIN ROCK LAMELLAE/MEDIUM PLATE

PU big board



岩壁嶮峻连纹大板
Rock walls are jagged and jagged
规格size:2400*800(2-12公分)

羽毛石
FEATHER STONE



羽毛石 Feather stone
规格size: 900*200mm (2-6公分)

古典瓦片
BLACK MOUNTAIN ROCK LAMELLAE/MEDIUM PLATE



古典瓦片 Classical tiles
规格size: 2400*400mm (2-4公分)



古典瓦片 Classical tiles
规格size: 1200*400mm

手工岩壁

Handmade rock wall



手工岩壁Handmade rock wall
规格size:3600*3100mm (2-15公分)

薄板 sheet



薄板sheet
规格size:2400*300mm (2-4公分)



薄板sheet
规格size:2400*600mm (1.5-2公分)

月球石
MOON STONE



月球石 (1) moon stone
规格size: 1200*600 (2-6公分)



月球石 (2) moon stone
规格size: 1200*600 (2-6公分)



月球石 moon stone
规格size: 2400*600 (2-6公分)



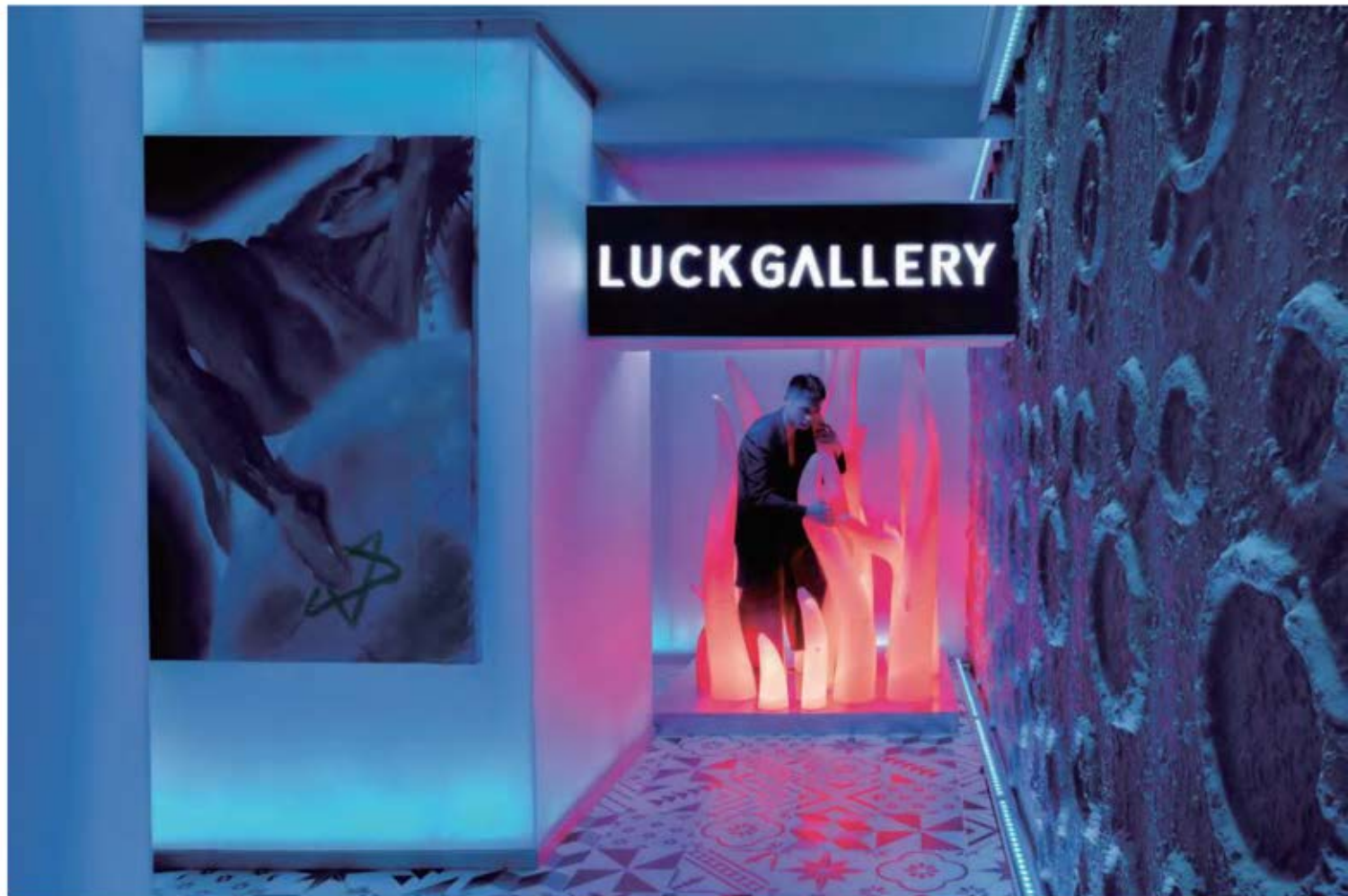
月球石 moon stone
规格size: 1500*750 (2-6公分)



月球石 moon stone
规格size: 1500*750 (2-6公分)



月球石 moon stone
规格size: 3000*750 (2-6公分)



星云石
STAR MARBLE



星云石Star marble
规格size:1200*600mm (2-3公分)



星云石Star marble
规格size:2400*600mm (2-3公分)

新款流水石
NEW RUNNING STONE



新款流水石New running stone
规格size:1200*600mm (2-3公分)



新款流水石New running stone
规格size:2400*600mm (2-3公分)

新款石条柱
NEW STONE BAR COLUMN

PU big board



新款石条柱New stone bar column
规格size:2400*500mm (2-9公分)



新款石条柱New stone bar column
规格size:1200*500mm (2-9公分)



山峭石
Mountain crest stone



山峭石Mountain crest stone
规格size:3000*750mm (2-3公分)

山峭石Mountain crest stone
规格size:3000*750mm (2-3公分)

蘑菇石(新款)
Mushroom Stone (New)

PU big board



新款蘑菇石New Mushroom stone
规格size:1200*600 (2-9公分左右)



新款蘑菇石New Mushroom stone
规格size:1200*600 (2-9公分左右)

腾云石
Floating cloud stone



腾云石Floating cloud stone
规格size:3000*600 (2-4公分)

PU 构件
PU ARTIFACTS



梯形构件Trapezoidal artifacts
规格size:600*600mm (3.5公分) 1个版面



梯形构件Trapezoidal artifacts
规格size:1200*600mm (3.5公分) 1个版面



梯形构件Trapezoidal artifacts
规格size:3000*600 (5公分左右)



梯形构件Trapezoidal artifacts
规格size:2400*600mm (3.5公分) 1个版面



回形构件Back to the form component
规格size:600*600mm (3.5公分) 1个版面



回形构件Back to the form component
规格size:1200*600mm (3.5公分) 1个版面



圆形构件Circular artifacts
规格size:600*600mm (3.5公分) 1个版面



圆形构件Circular artifacts
规格size:1200*600mm (3.5公分) 1个版面

大长格
CHORD MEMBER



大长格Large long lattice
规格size:3000*600(5公分左右)



大长格Large long lattice
规格size:1500*600(5公分左右)



大长格Large long lattice





和弦构件
CHORD MEMBER



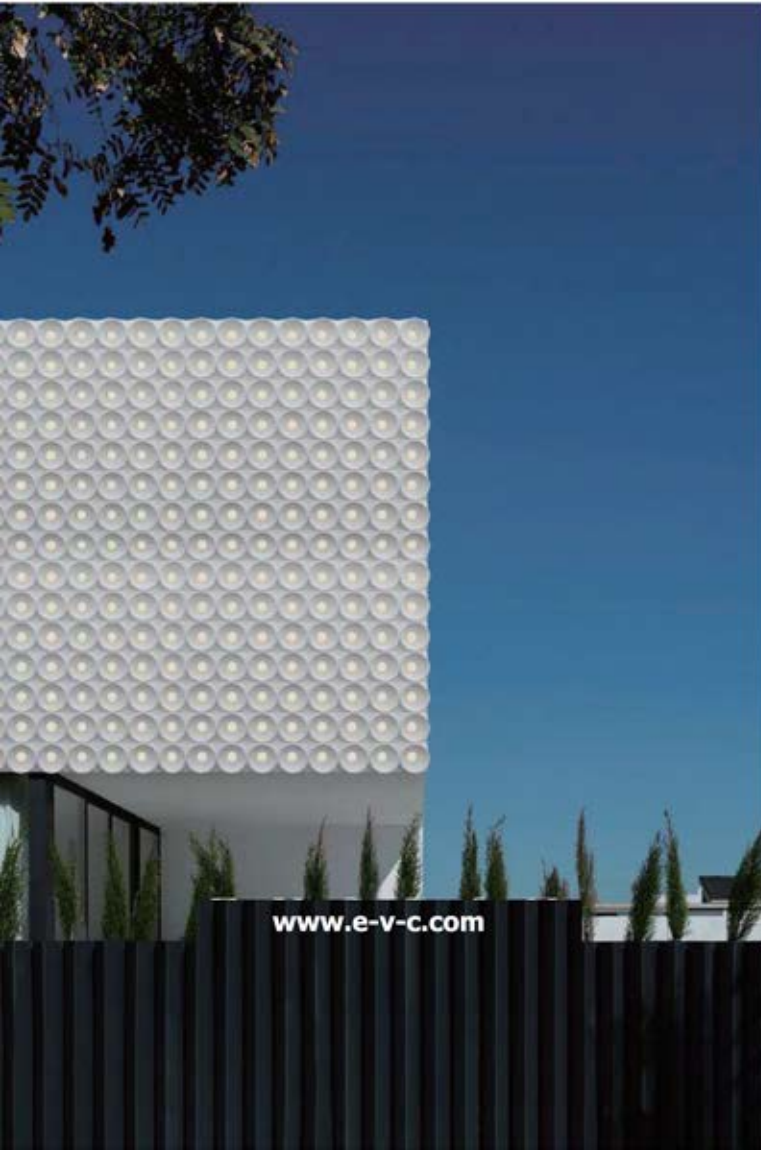
和弦构件Chord member
规格size:1500*600mm
(厚度1-4公分)



和弦构件Chord member
规格size:1200*600mm
(厚度1-4公分)

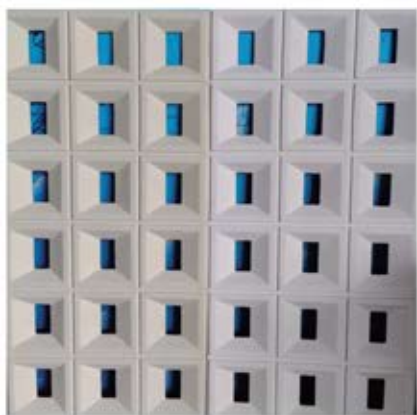


和弦构件Chord member
规格size:薄款3000*600mm
(厚度1-4公分)



麻面九宫格长格
9-box grid

PU big board



麻面九宫格长格 9-box grid
规格size:1200X600 (4公分)

风云景石
Fengyun Jingshi



风云景石Fengyun Jingshi
规格size:2400*600*mm(2-5公分)

格栅石
Grid stone



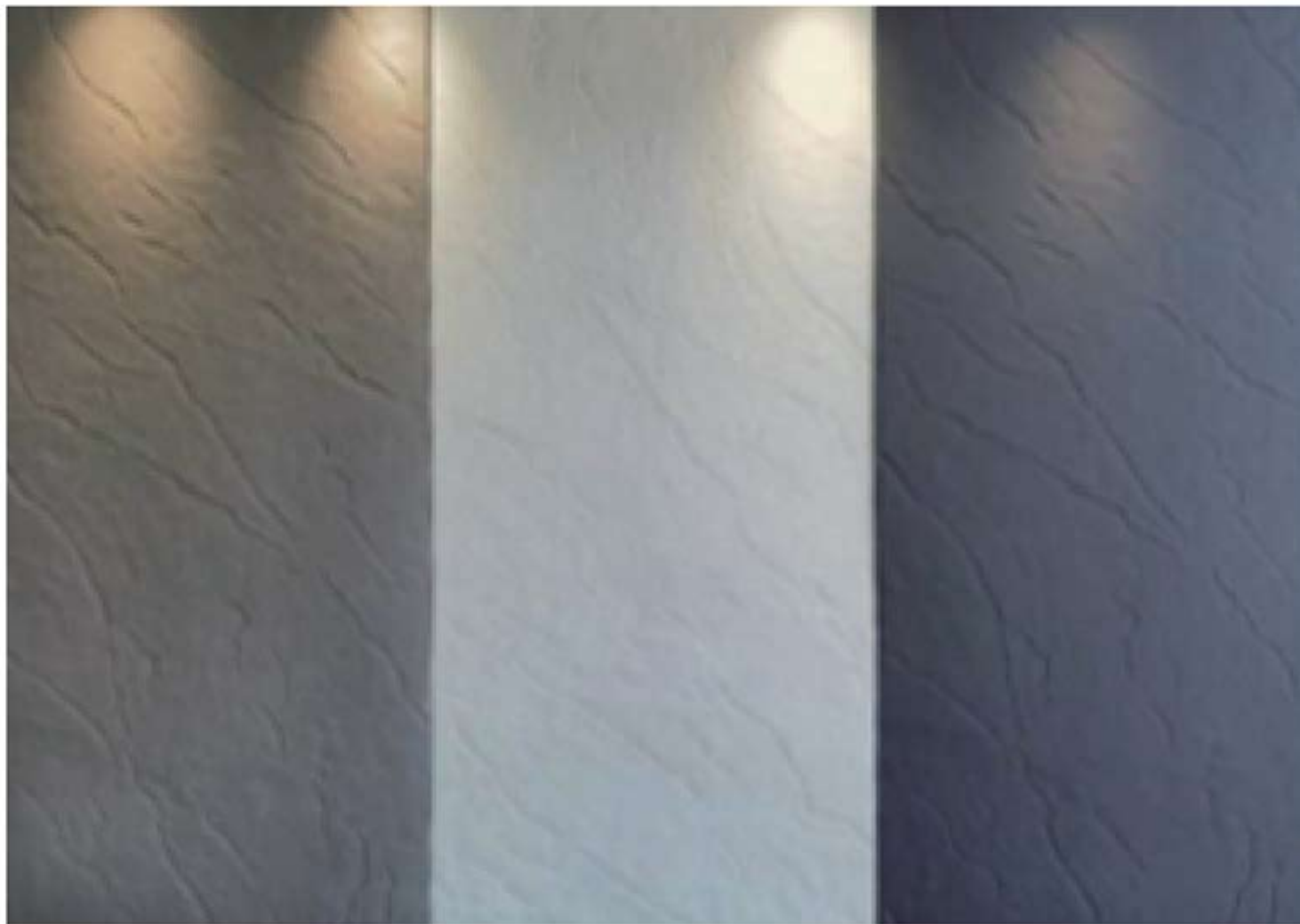
格栅石Grid stone
规格size:1200/2400/3600*600*mm(1.5-4公分)

金花石
Jinhua Stone



金花石 Jinhua Stone
规格size:3000*1200mm(2-4公分)

烈焰石
Flame Stone



烈焰石Flame Stone
规格size:3000*1200mm(1-2公分)

峭壁巉峻

The cliffs are steep and steep



峭壁巉峻The cliffs are steep and steep
规格size:3000*1200mm(2-12公分)

碎石拼
Broken stone splicing



碎石拼Broken stone splicing
规格size:3000*750mm(2-4公分)

月球石新款
New Moon Stone



月球石新款New Moon Stone
规格size:2400*600mm(2-5公分)

杂条石
Miscellaneous stripe stone



杂条石 Miscellaneous stripe stone
规格size:1200/2400*600mm(2-6公分)

小条石
Small stripe stone



小条石Small stripe stone
规格size:1200/2400/3600*600mm(2-4公分)

脉络石
Choroid stone



脉络石Choroid stone
规格size:1200*600mm(2公分)

薄款蘑菇石

Thin mushroom stone



薄款蘑菇石Thin mushroom stone
规格size:1200*600mm(1-6公分)

防火检测 - PU材质 Fire detection - PU material

Test Report
检测报告

报告编号: JGJL20210905-01

检测机构: 江苏江化检测有限公司
客户名称: 河北博泰新材料科技股份有限公司
生产单位: 河北博泰新材料科技股份有限公司
检测类别: 委托
报告日期: 二〇二一年九月九日

江苏江化检测有限公司
Jiangsu Jianghua Petrochemicals Product Quality Testing Co., Ltd.
(中国质量认证协会质量检验合格认证中心)
Inspected Testing Center for Petrochemicals from China Petrochemical Industry Association

检测报告

报告编号: JGJL20210905-01

检测项目	单位	检测结果	判定
燃烧热值	%	27.26%	合格
烟气生成量	%	25%	合格
烟气生成量	%	25%	合格

检测日期: 2021年09月03日-2021年09月09日
检测地点: 20017 JGJL20210905-0001 09-04-2001
检测依据: GB 12468.2-2001-0801 GB 8624-2012

检测单位: 江苏江化检测有限公司
检测人员: 李俊 李俊
报告日期: 二〇二一年九月九日

检测报告

报告编号: JGJL20210905-01

样品照片 (高倍镜)



样品照片 (低倍镜)



报告日期: 二〇二一年九月九日

注意事项

1. 本检测报告的有效性依赖于送检样品的真实性、完整性和代表性。
2. 本检测报告的有效性依赖于检测方法的正确性和检测设备的准确性。
3. 本检测报告的有效性依赖于检测人员的资质和检测环境的符合性。
4. 本检测报告的有效性依赖于检测结果的准确性和可靠性。
5. 本检测报告的有效性依赖于检测报告的完整性和清晰性。
6. 本检测报告的有效性依赖于检测报告的及时性和有效性。
7. 本检测报告的有效性依赖于检测报告的合法性和合规性。
8. 本检测报告的有效性依赖于检测报告的保密性和安全性。
9. 本检测报告的有效性依赖于检测报告的公正性和客观性。
10. 本检测报告的有效性依赖于检测报告的透明性和可追溯性。

Points for attention

1. The validity of this test report depends on the authenticity, integrity and representativeness of the samples submitted for testing.
2. The validity of this test report depends on the correctness of the detection method and the accuracy of the detection equipment.
3. The validity of this test report depends on the qualification of the detection personnel and the compliance of the detection environment.
4. The validity of this test report depends on the accuracy and reliability of the detection results.
5. The validity of this test report depends on the completeness and clarity of the detection report.
6. The validity of this test report depends on the timeliness and effectiveness of the detection report.
7. The validity of this test report depends on the legality and compliance of the detection report.
8. The validity of this test report depends on the confidentiality and security of the detection report.
9. The validity of this test report depends on the fairness and objectivity of the detection report.
10. The validity of this test report depends on the transparency and traceability of the detection report.

吸水率检测 - PU饰面板 Water absorption detection - PU decorative panel

检验报告

报告编号: JHAC20210905-01

检测机构: 国家化学建筑材料测试中心
客户名称: 河北博泰新材料科技股份有限公司
生产单位: 河北博泰新材料科技股份有限公司
检测类别: 委托
报告日期: 二〇二一年九月九日

国家化学建筑材料测试中心 (材料测试部)
中国石油化工股份有限公司北京化工研究院

国家化学建筑材料测试中心 (材料测试部)
检验报告

报告编号: JHAC20210905-01

检测项目	单位	检测结果	判定
吸水率	%	4.3	合格

检测日期: 2021年09月03日-2021年09月09日
检测地点: 20017 JHAC20210905-0001 09-04-2001
检测依据: GB 12468.2-2001-0801 GB 8624-2012

检测单位: 国家化学建筑材料测试中心
检测人员: 李俊 李俊
报告日期: 二〇二一年九月九日

国家化学建筑材料测试中心 (材料测试部)
检验报告

报告编号: JHAC20210905-01

检测项目	单位	检测结果	判定
吸水率	%	4.3	合格


检测日期: 2021年09月03日-2021年09月09日
检测地点: 20017 JHAC20210905-0001 09-04-2001
检测依据: GB 12468.2-2001-0801 GB 8624-2012

检测单位: 国家化学建筑材料测试中心
检测人员: 李俊 李俊
报告日期: 二〇二一年九月九日

sample projects

PU big board

www.e-v-c.com



www.e-v-c.com



www.e-v-c.com

www.e-v-c.com

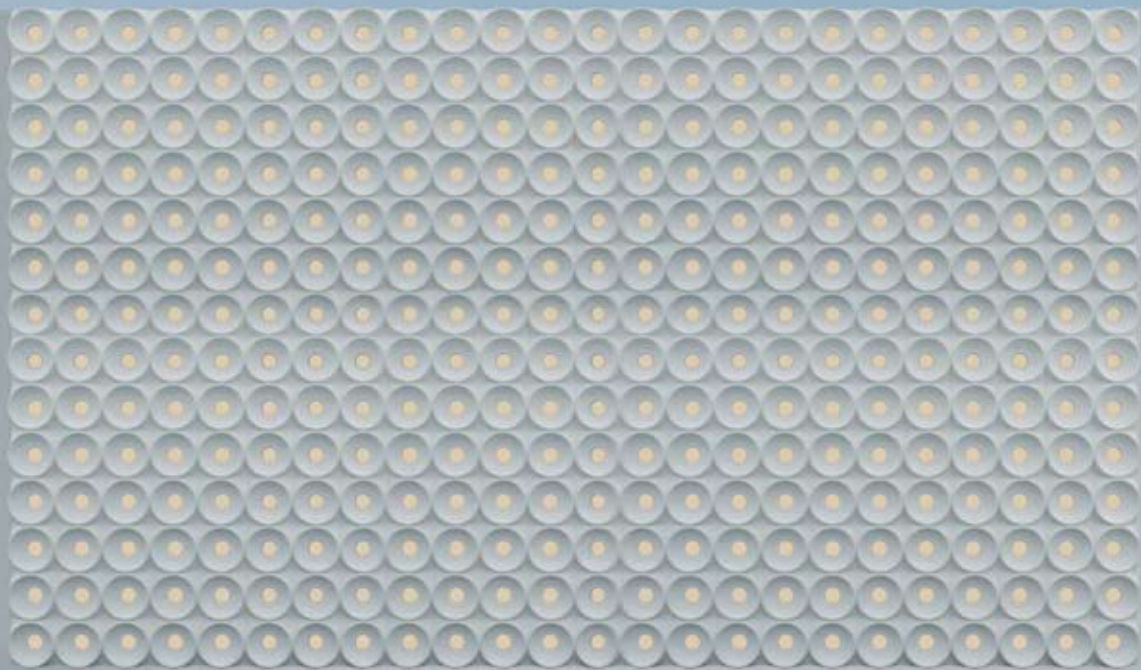


PU big boat

森·新材
DESIGNED WITH DESIGN

www.e-v-c.com





www.e-v-c.com





www.e-v-c.com

安装说明
INSTALLATION INSTRUCTIONS



Tools: wood strip/steel pipe, woodworking saw, structural glue,
low-pressure lamp belt/silicone lamp belt, etc

1.wall treatment: chord component installation will leak out of the bottom plate, the bottom surface of the first to do a good color or finished wallboard veneer.

2.Wood fixation: according to the shape size, the wood is fixed on the bottom plate for winding the lamp belt. The wood is 3-4cm away from the circular hollow, so as to hide the lamp belt. (The size spacing in the figure is 12cm and 18mm respectively, which can be adjusted according to the situation on site)



3.install the light belt: paste the low-voltage light belt on the wooden side, adjust the lighting direction according to the lighting needs, and cut the grooves on the wooden side on both sides of the shape to pass the light belt. after pasting, stick it on the unwanted light source on the side with black tape (you can do without pasting).

4.installation members: evenly apply the structural glue on the back of the string members and paste it on the wooden side. after pasting, glue can be added to the surrounding frame position.

note: waterproof light source is needed for outdoor installation. the wooden square can be replaced with steel pipe. when the sticking height is over 3 meters, screws/air nail gun should be added to fix the corners (it will affect the appearance). when the height is above 3 meters, the molding edge shall be reinforced with wall/steel plate.

PU big board

www.e-v-c.com





EVC
company

<http://www.e-v-c.com/>

Product architecture

custom wall panel	Ultra-thin stone	B series metal profile
Wooden plate	Volcanic Rocks	Aluminum foam
Commercial space veneer fire panels	Metal plated stone brick	Z series aluminum foam
Ultra clear mirror plate	Xuangu volcanic rock	Living moss
Plaster texture plate	Z series PU decorative panel	Creative modular custom products
Starry sky top acoustic board	H series PU large board	Mosaic of resin
Y series acrylic sheet	B series PU decorative panel	Y series creative module
Transparent art cement	PU decorative panel	Commercial special board
N-series cement casting plate	Fusion Cement member	H Series Outdoor flooring
C series soft stone	D series modeling brick	N series handmade brick
Art poured board	M series component bricks	Super black brick
Cement decorative board	K series foamed ceramics	Dupont paper
S series soft stone	K series crystal brick	Weaving of bamboo and rattan
3D cement brick	Hollow glass brick	The deep mirror
FRP cement casting plate	X series jade glass	Cement component lighting system
Microcement siding	T series crystal brick	PU component lighting system
Perlite board	J series water corrugated plate	D series foamed ceramics
Church art glass	Aluminum embossed plate	B series metal lines
X series hand sanded brick	FRP emerald grille	French textured paper
led photoglass (hard)	Outlet tile	

